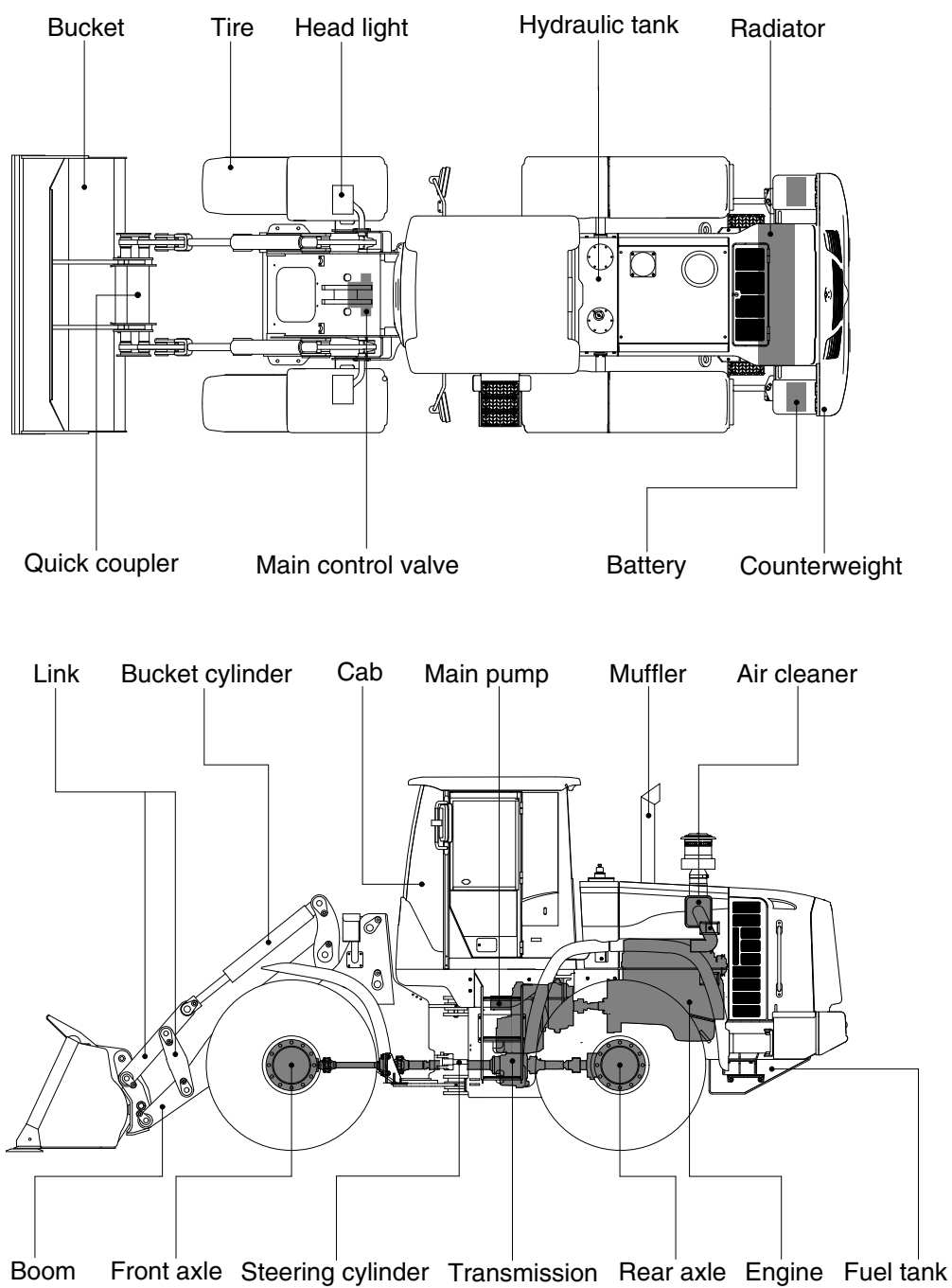


2. SPECIFICATIONS

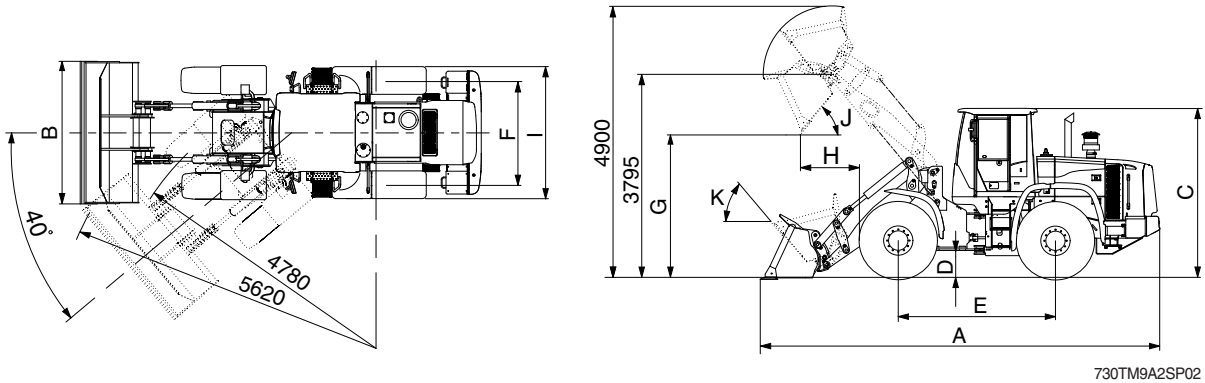
1. MAJOR COMPONENTS



730TM9A2SP05

2. SPECIFICATIONS

WITH BOLT-ON CUTTING EDGE TYPE BUCKET



730TM9A2SP02

Description			Unit	Specification
Operating weight			kg (lb)	10900 (24030)
Bucket capacity	Struck		m³ (yd³)	1.45 (1.9)
	Heaped			1.7 (2.2)
Overall length	A		mm (ft-in)	7110 (23' 4")
Overall width	B			2400 (7' 10")
Overall height	C			3170 (10' 5")
Ground clearance	D			370 (1' 3")
Wheelbase	E			2800 (9' 2")
Tread	F			1850 (6' 0")
Dump clearance at 45°	G			2785 (9' 2")
Dump reach (full lift)	H			1130 (3' 8")
Width over tires	I			2295 (7' 6")
Dump angle	J			degree (°)
Roll back angle (carry position)	K		54	
Cycle time	Lift (with load)		sec	5.4
	Dump (with load)			1.6
	Lower (empty)			2.8
Maximum travel speed			km/hr (mph)	39.2 (24.4)
Braking distance			m (ft-in)	12 (39' 4")
Minimum turning radius (center of outside tire)				4.78 (15' 8")
Gradeability			degree (°)	30
Breakout force			kg (lb)	9960 (21960)
Travel speed	Forward	First gear	km/hr (mph)	6.8 (4.2)
		Second gear		12.4 (7.7)
		Third gear		24.1 (15.0)
		Fourth gear		39.2 (24.4)
	Reverse	First gear		7.2 (4.5)
		Second gear		13.1 (8.1)
		Third gear		25.3 (15.7)

3. WEIGHT

Item	kg	lb
Front frame assembly	806	1780
Rear frame assembly	1095	2410
Front fender (LH & RH)	31	68
Counterweight	410	900
Cab assembly	700	1540
Engine assembly	390	860
Transmission assembly	425	937
Drive shaft (front)	17	37
Drive shaft (center)	17	37
Drive shaft (rear)	9	20
Drive shaft (upper)	7	15
Front axle (include differential)	520	1150
Rear axle (include differential)	530	1170
Tire (17.5-25, 12PR, L3)	130	290
Hydraulic tank assembly	192	423
Fuel tank assembly	264	1370
Main pump assembly	26	57
Fan & brake pump assembly	7	15
Main control valve (2/3 spool)	34/41	75/90
Boom assembly	515	1140
Quick coupler assembly	215	474
Bucket link	41	90
1.7 m ³ bucket, with bolt on cutting edge	810	1790
Boom cylinder assembly	70	150
Bucket cylinder assembly	78	170
Steering cylinder assembly	15	30
Seat	40	88
Battery	28	62

4. SPECIFICATION FOR MAJOR COMPONENTS

1) ENGINE

Item	Specification
Model	Cummins QSB4.5
Type	4-cycle turbocharged and charge air-cooled diesel engine.
Cooling method	Water cooling
Number of cylinders and arrangement	4 cylinders, in-line
Firing order	1-3-2-4
Combustion chamber type	Direct injection type
Cylinder bore × stroke	107 × 124 mm (4.2" × 4.9")
Piston displacement	4500 cc (275 cu in)
Compression ratio	17.2 : 1
Rated gross horse power	130 hp at 2200 rpm
Maximum gross torque at 1500rpm	63 kgf · m (457 lbf · ft)
Engine oil quantity	11 l (2.9 U.S. gal)
Dry weight	390 kg (860 lb)
High idling speed	2230 ± 50rpm
Low idling speed	900 ± 25 rpm
Rated fuel consumption (at rated)	221 g/kw · hr
Starting motor	Nippondenso PA90S (24V-4.8 kW)
Alternator	Delco Remy 24SI (24V-70Amp)
Battery	2 × 12V × 100Ah

2) MAIN PUMP

Item	Specification
Type	Variable displacement piston pump
Capacity	36+32.3 cc/rev
Maximum operating pressure	250 kgf/cm ² (3560 psi)
Rated operating speed	2100 rpm
Rated output flow	126 l /min (33.3 U.S.gpm)

3) FAN AND BRAKE PUMP

Item	Specification	
	Fan	Brake
Type	Fixed displacement tandem gear pump	
Capacity	11.9 cc/rev	9.17 cc/rev
Maximum operating pressure	120 kgf/cm ² (1710 psi)	150 kgf/cm ² (2130 psi)
Rated operating speed	2100 rpm	
Rated output flow	25 l /min (6.6 U.S.gpm)	19 l /min (5.0 U.S.gpm)

4) MAIN CONTROL VALVE

Item	Specification
Type	2 spool
Operating method	Hydraulic pilot assist
Main relief valve set pressure	250 kgf/cm ² (3560 psi)
Overload relief valve set pressure	300 kgf/cm ² (4270 psi) ★ 150 kgf/cm ² (2130 psi)

★ Bucket dump

5) REMOTE CONTROL VALVE

Item	Specification
Type	Joystick (or with aux lever)
Control pressure	Minimum 3.7 kgf/cm ² (52.6 psi)
	Maximum 30 kgf/cm ² (427 psi)

6) CYLINDER

Item	Specification
Boom cylinder	Bore dia × Rod dia × Stroke ø 100 × ø 65 × 750 mm
Bucket cylinder	Bore dia × Rod dia × Stroke ø 90 × ø 50 × 775 mm
Steering cylinder	Bore dia × Rod dia × Stroke ø 60 × ø 35 × 412 mm

7) DYNAMIC POWER TRANSMISSION DEVICES

Item		Specification
Torque converter	Model	ZF 4WG130
	Type	Single-stage, single-phase
	Ratio	2.381 : 1
Transmission	Type	Full-automatic power shift
	Gear shift	Forward fourth gear, reverse third gear
	Control	Electrical single lever type, kick-down system
	Pump rated flow	85 ℓ /min (22.5 U.S.gpm) at 2000 rpm
Axle	Drive devices	4-wheel drive
	Front	Front fixed location
	Rear	Oscillation $\pm 12^\circ$ of center pin-loaded
Wheels	Tires	17.5-25, 12PR (L3)
Brakes	Travel	Four-wheel, wet-disc type, full hydraulic
	Parking	Spring applied, hydraulic released brake on transmission
Steering	Type	Full hydraulic, articulated
	Steering angle	40° to both right and left angle, respectively